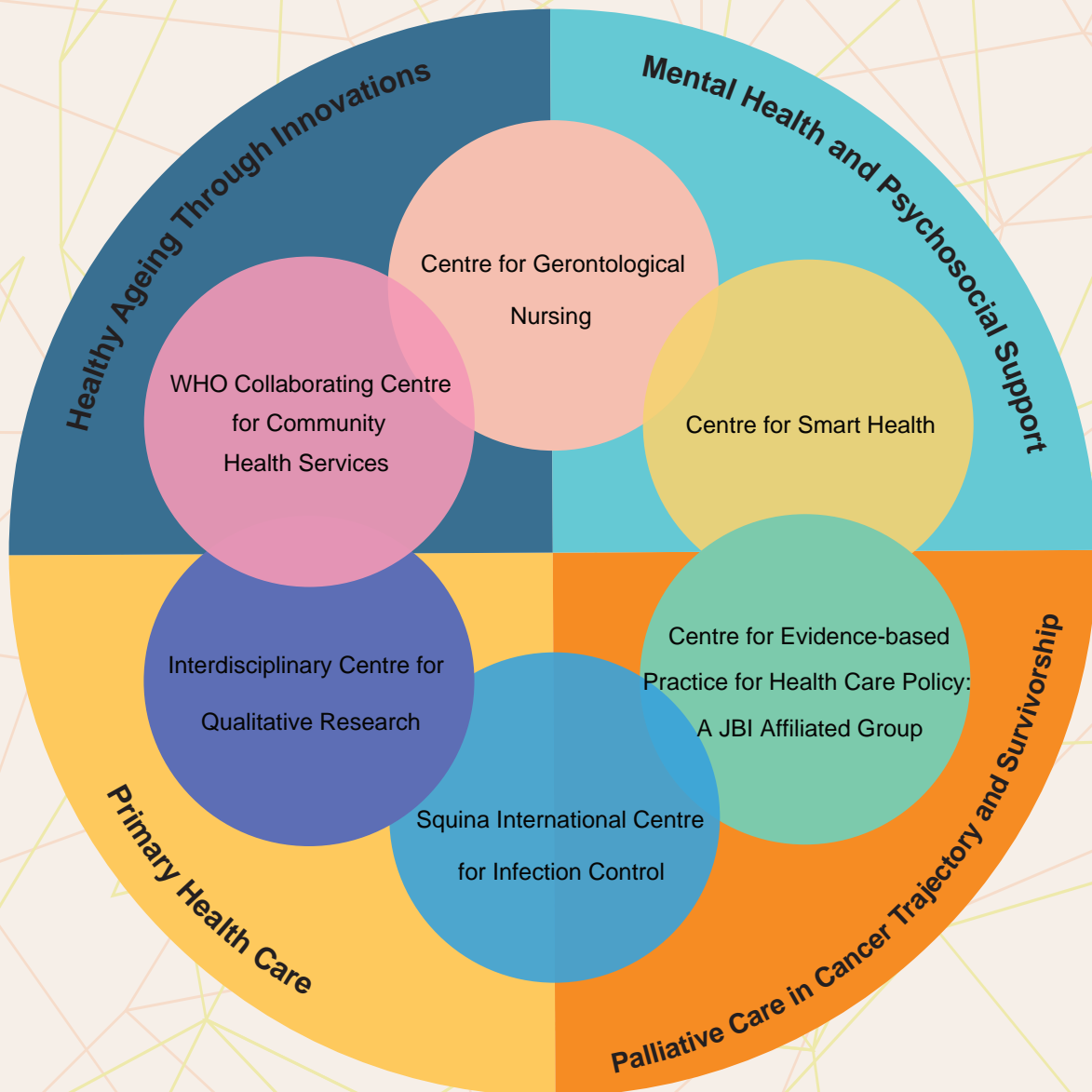


## International Nursing Scholarship for Pre-PhD in Research Excellence (*INSPIRE*)



Do you want to develop your career in the academic field?

Do you want to develop into a research scholar?

Are you planning to do a PhD study soon?

If your answer is **YES** to one of these questions, this **INSPIRE** Programme is for you.

The motto of the School of Nursing (SN) of The Hong Kong Polytechnic University (PolyU) is “To excel in Nursing for the well-being of mankind”. Join us at SN, and we will help you make a difference to your life and **INSPIRE** you to apply your academic excellence in a professional context for the benefit of mankind. Join us for a unique learning experience and you will be better equipped for further success and future challenges where it counts most – in the real world.

## International Nursing Scholarship for Pre-PhD in Research Excellence (INSPIRE)

### About PolyU

PolyU is a government-funded university in the Hong Kong Special Administrative Region of the People's Republic of China. The University has a strong team of academic staff with solid experience in supervising research postgraduate students. In addition, many of our Chair Professors/Professors are internationally leading experts in their research areas. World-class research with emphasis on high application value is conducted.

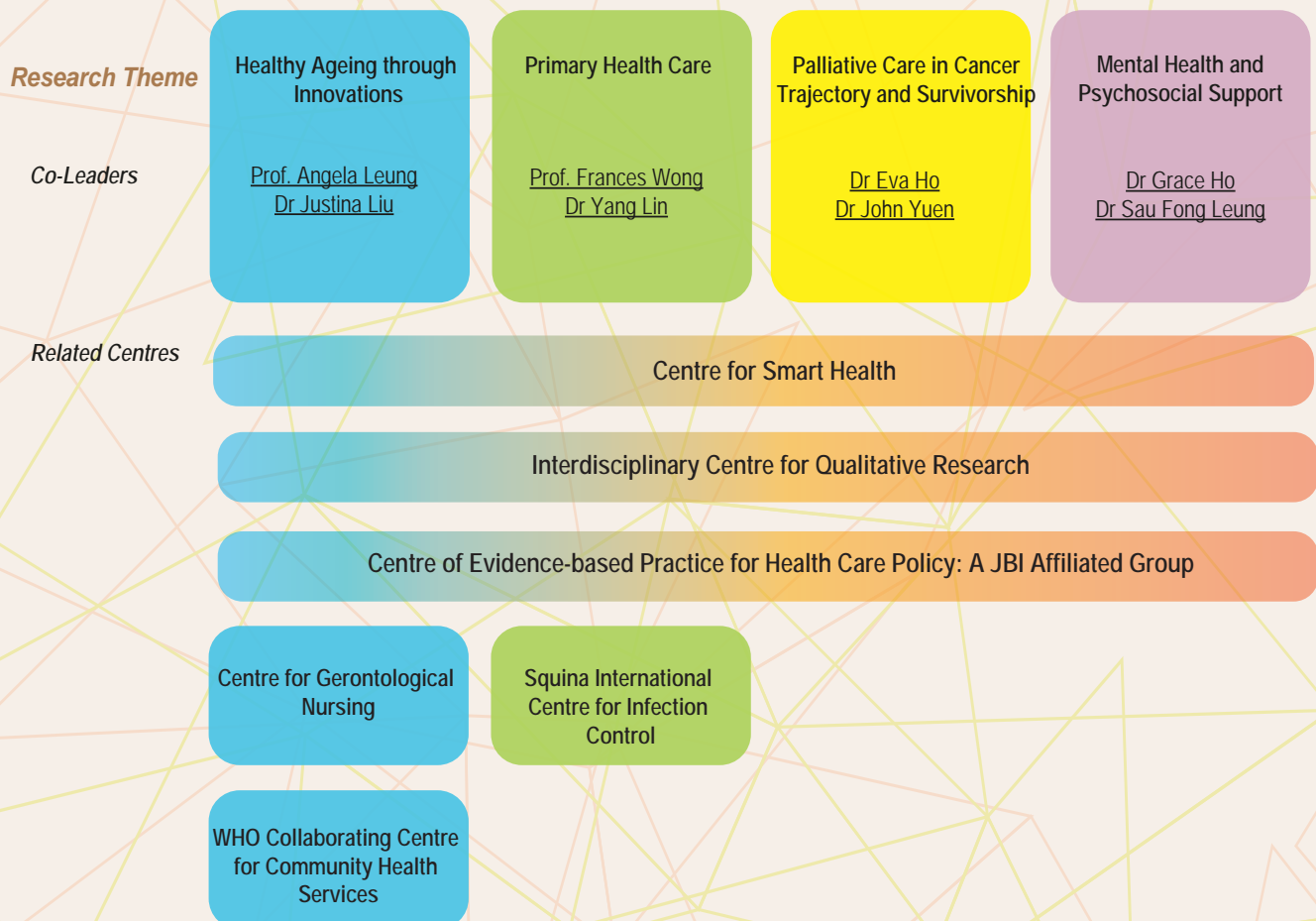


## About SN

The mission of research in School of Nursing is to advance evidence-based nursing practice for an optimal health and well-being of all people locally, nationally, and internationally. The School provides a nurturing and supportive environment for these activities of scientific knowledge inquiry. It also provides a platform and infrastructure for intellectual exchanges and opportunities and challenges for researchers in Hong Kong, Mainland China and overseas.

The research strengths of the School lie in the diversity of our output and the innovations and talents of our faculty. We have been conducting high quality clinical and applied research in nursing and health sciences. Our high quality and applied research contributed to various positive impacts on nursing sciences and knowledge for education and social policies. While the School supports different new research initiatives and development, the School invests strategically and continuously in prioritized areas of research in order to develop the critical mass and excellence of research based on the School's internationally recognized strengths and expertise.

## Areas of Excellence



## Background

There are opportunities for local and international students to study for a PhD in Hong Kong. Options include:

- Fully funded (competitive) Hong Kong PhD Fellowship Scheme;
- Fully funded (with stipend) School of Nursing PhD scholarships;
- Joint PhD Programmes Leading to Dual Awards
- Joint Supervision Scheme with the Chinese Mainland, Taiwan and Macao Universities (the student will be registered at the Chinese Mainland, Taiwan and Macao Universities concerned, whereas PolyU acts as the co-supervisor of the student and the student needs to fulfill the residence requirement).

## Aims

The aims of this *INSPIREing* programme are:

**\* For those local or international students who are planning to read for a PhD degree and would like to consider a HK fellowship / scholarship**

1. To introduce PhD training in the School of Nursing to international students.
2. To provide an opportunity for international students to explore and understand life in Hong Kong as a student.
3. To bring together high caliber Hong Kong and international students to discuss doctoral education challenges, opportunities and collaborations.
4. To encourage future cross-institutional collaborations.

### Number

Let's cap the maximum attendants to 20 international plus 5 locals.

### Duration

2 weeks

### Date

17 July - 28 July 2023  
(Mon - Fri)

### Funding

Asia

HK\$5,000

Rest of the world

HK\$10,000

(to cover costs towards accommodation *plus* air fares for overseas candidates)

\* participants need to arrange accommodation by themselves

\*\* financial support will not be provided to local candidates



# Programme information

Our School will offer a summer programme to the successful applicants, covering seminars, sharing, discussions, cultural exchange, visit of PolyU's facilities, with details as follows:

## Introduction

- The Hong Kong Polytechnic University
- School of Nursing: Areas of Excellence
- Healthcare in Hong Kong

## Research Preparation

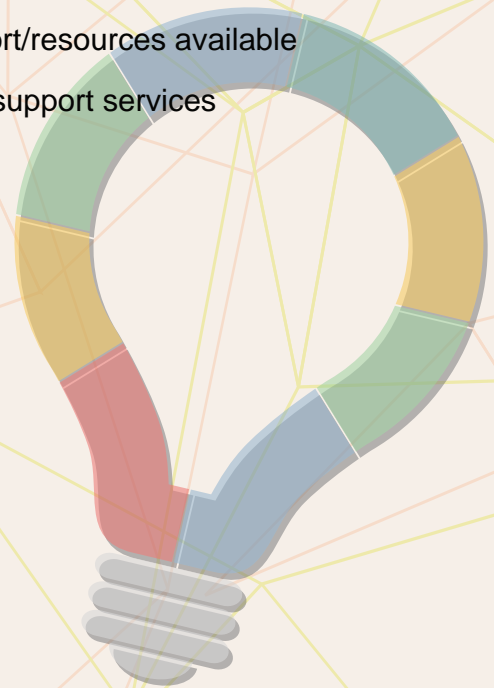
- Research topic brainstorming discussions
- Decision on a PhD topic / research question
- Challenges in PhD training
- Exercises/discussion with student presentations around their research experiences
- Research student life at The PolyU & Research support/resources available
- Studying in another country: Student experience and support services

## Research Areas

- Healthy Ageing
- Health Technology and Innovations
- Cancer Care in Trajectory and Survivorship
- Mental Health
- Traditional Chinese Medicine

## Others

- Social programme



# inspppire

# How to apply

If you want to be **INSPIRED**, send us the following documents:

1. Letter of how this Scholarship will help you and your future PhD plans, including:
  - Significance to your field and professional development
  - Significance to the interests and needs of your host country
2. CV
3. Two references from programme leads and/or supervisors with particular comments on research ability and potential
4. Copy of certificate and transcript of studies
5. Vision on studying in Hong Kong
6. A maximum of 2 pages of a research idea for a potential PhD, divided into - Introduction, Methods, Analysis, Implications for practice sections

## Selection Criteria

Our School will take into account of the following factors:

- Academic qualifications (completion of BSc and MSc degrees) and awards
  - ✓ GPA score in the Bachelor's degree programme (preferably a first-class (honours) degree, or a GPA of 3.7 or above (out of 4.0) or equivalent)
  - ✓ GPA score in the Master's degree programme
- Awards in academic competitions and publications in journals
- \*English proficiency (An overall score of at least 6.5 in the International English Language Testing System (IELTS); or A Test of English as a Foreign Language (TOEFL) score of 80 or above for the Internet-based test.
- Topic fits with strategic research priorities of the School of Nursing, PolyU
- Research experience
- Engagement with community issues and/or international exposure (e.g. experience and record in professional and/or extra-curricular activities)
- Healthcare background (nursing profession will be a priority)

Remarks:

\*All English language test scores are considered valid for two years after the date of the test.

Applications that do not provide evidence of an English language test as stipulated above (with the exception of those have a degree for which English was the language of instruction at a recognised university), will not be considered.

**Application deadline: 27 March 2023 (Monday)**

- **Online registration**

**Announcement of result: April 2023**



**Contact for further information**



For applications and enquiries:  
kiki.chung@polyu.edu.hk ( Ms Kiki Chung)



For further information about the School of Nursing:  
<http://sn.polyu.edu.hk>



<https://polyu.hk/plBDD>

**REGISTER NOW**